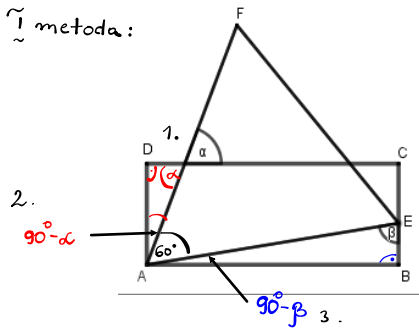


I metoda:

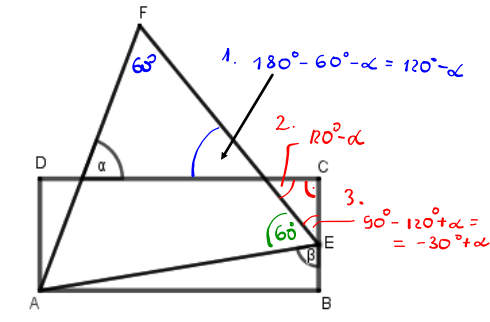


4.

$$90^\circ - \alpha + 60^\circ + 90^\circ - \beta = 90^\circ$$

$$150^\circ = \alpha + \beta$$

II Metoda:



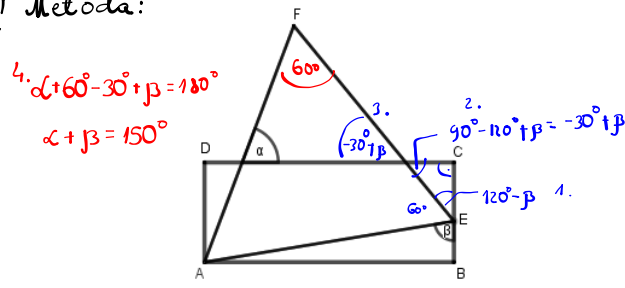
4.

$$\beta + 60^\circ + (-30^\circ + \alpha) = 180^\circ$$

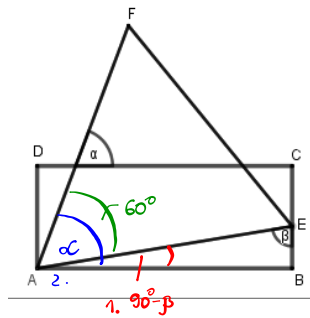
$$\beta + 30^\circ + \alpha = 180^\circ$$

$$\alpha + \beta = 150^\circ$$

III Metoda:



IV Metoda:



3.

$$\alpha = 90^\circ - \beta + 60^\circ$$

$$\alpha = 150^\circ - \beta$$

$$\alpha + \beta = 150^\circ$$